



OAKFIELD



Old Heathfield, Heathfield TN21 9AB

Price Guide £650,000



## Old Heathfield, Heathfield TN21 9AB

Tucked away in a peaceful corner of Old Heathfield, this generously sized four-bedroom detached home offers fantastic potential, spacious interiors, and beautiful views over open fields to the rear.

The property is entered via a welcoming porch, leading into a well-planned layout that includes four double bedrooms, all with built-in wardrobes, offering plenty of storage throughout.

A standout feature is the bright and airy sunroom, perfectly positioned to overlook the garden—an ideal spot for morning coffee or quiet reading.

The heart of the home is a substantial kitchen and dining area, offering excellent space for family life and entertaining, with doors opening out to the garden.

Although the house would benefit from some modernisation, it provides a fantastic scope to update and personalise.

A separate utility room and boiler room add practicality, while multiple storage cupboards are cleverly integrated throughout the home.

Outside, the property enjoys a wraparound garden, mainly laid to lawn with mature planting and open views of the fields beyond, creating a sense of privacy and calm.

The large driveway offers parking for several vehicles and is complemented by a detached garage.

Positioned within easy reach of Heathfield's local junior school and just a short walk to Heathfield Community College, this home is perfectly located for families looking to settle in a quiet community-focused setting with countryside charm.

A rare opportunity in a prime village location, this home is ready for its next chapter.





**Lounge**  
18'1 x 14'2 (5.51m x 4.32m)

**Dining Room**  
12'5 x 9'5 (3.78m x 2.87m)

**Kitchen**  
22'8 x 15'3 (6.91m x 4.65m)

**Sun Room**  
11'6 x 7'5 (3.51m x 2.26m)

**Bedroom 1**  
16'5 x 14'9 (5.00m x 4.50m)

**Bedroom 2**  
12'5 x 11'5 (3.78m x 3.48m)

**Bedroom 3**  
11'4 x 10'8 (3.45m x 3.25m)

**Bedroom 4**  
11'4 x 9'2 (3.45m x 2.79m)

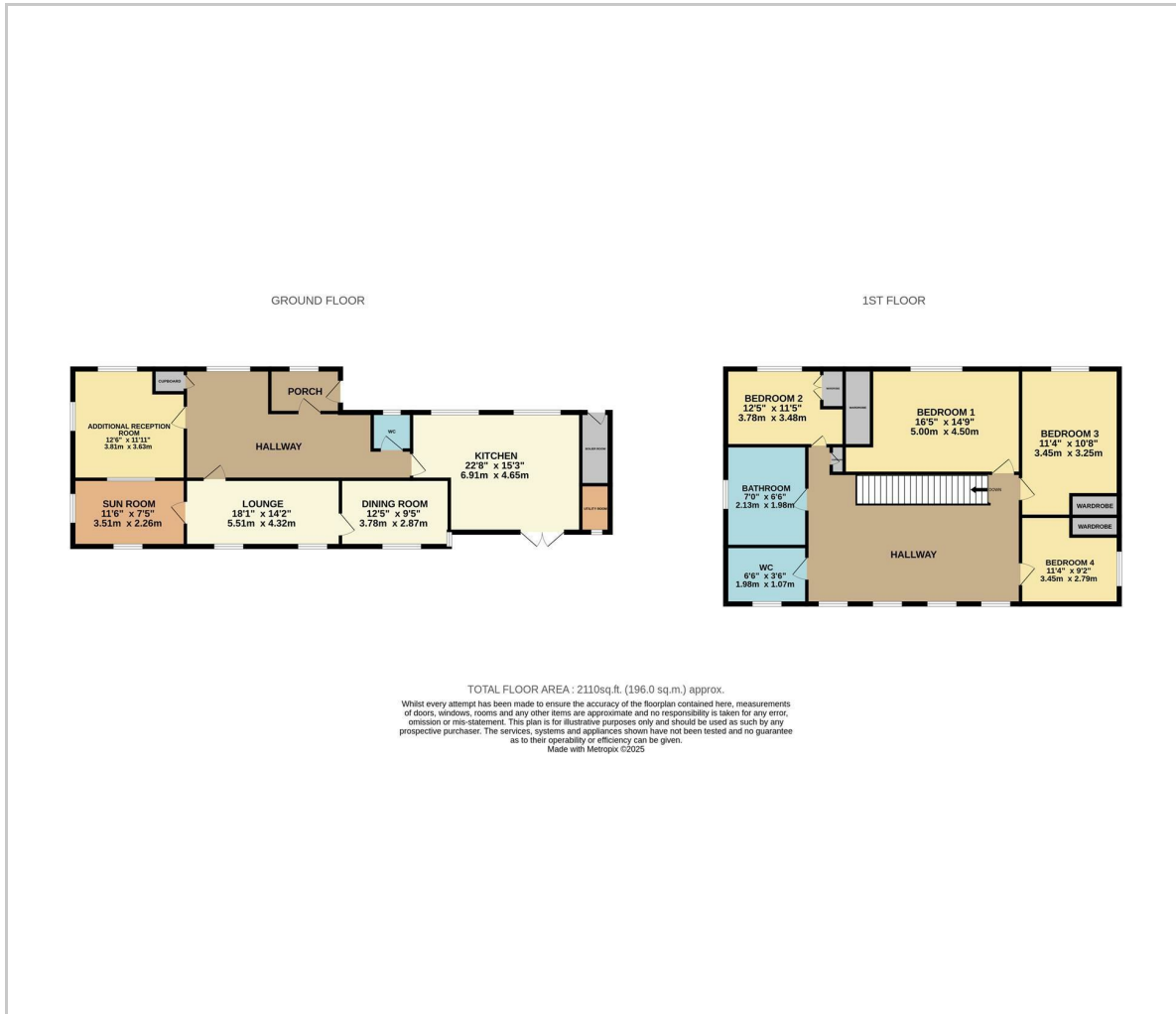
**Bathroom**  
7'0 x 6'6 (2.13m x 1.98m)

**WC**  
6'6 x 3'6 (1.98m x 1.07m)

**Council Tax Band - G £4,347 per annum**



## Floor Plan



## Viewing

Please contact us on 01435 864233 if you wish to arrange a viewing appointment for this property or require further information.

These particulars, whilst believed to be accurate are set out as a general outline only for guidance and do not constitute any part of an offer or contract. Intending purchasers should not rely on them as statements of representation of fact, but must satisfy themselves by inspection or otherwise as to their accuracy. No person in this firm's employment has the authority to make or give any representation or warranty in respect of the property.

## Area Map



## Energy Efficiency Graph

